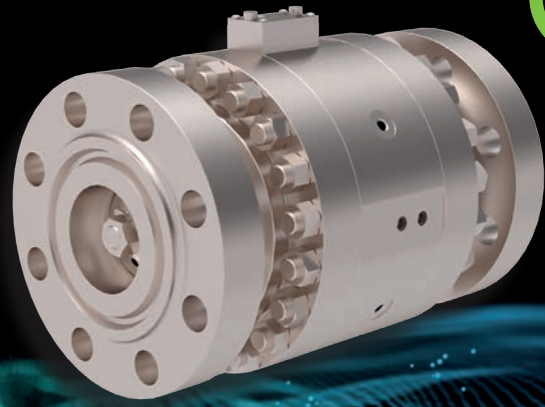


# STEMLESS ACTUATED AXIAL FLOW VALVE

MODEL: ES

High performance, axial flow valve with no mechanical actuator  
For upstream, midstream & downstream oil & gas applications.



## PRODUCT OVERVIEW

The Oxford Flow ES Series actuated valve offers class leading performance and reliability for oil & gas processes. By eliminating the traditional mechanical actuator and drivetrain in favour of direct hydraulic actuation, the ES Series offers class leading performance and reliability.

This game changing technology from Oxford Flow's ES Series valve is for use in the most demanding isolation and control applications.

Designed in accordance with API 6D/ASME B16.34  
Certifications.

- API 6FA Fire Safe
- Fugitive Emissions ISO 15848-1 Class AH C03
- Slurry Tested to API 6AV1

Manufactured and tested in compliance with international valve standards according to customer requirements, including but not limited to API, ANSI, ASME, BS, DIN, NORSOK, TR2000 and ISO.

## APPLICATIONS

Use with confidence in Upstream & Midstream Oil & Gas infrastructures.

In place of:

- Ball Valve
- Gate Valve
- Plug Valve
- Butterfly Valve
- Globe Valve
- Stem Actuated Axial Valve

## BENEFITS & FEATURES

- No mechanical actuator or drivetrain
- Reliable internal hydraulic actuation
- Isolation and control options available
- Dramatically reduced assembly size/weight
- No moving parts protruding valve housing
- Eliminates main source of fugitive emissions
- Debris tolerant
- Robust and reliable
- Non-intrusive position sensing
- Various fail-safe options available
- Back-up manual hydraulic overrides available

## Scope

- Temperature range -40°C to 140°C (-40°F to 284°F)
- Sizes 2" and up
- Pressure Class ASME #300 - #1500\*
- Stroke time ~2 seconds
- Shut Off Class CLASS VI (Soft Seat)  
CLASS V (Metal Seat)

\*Other pressure classes available on request.

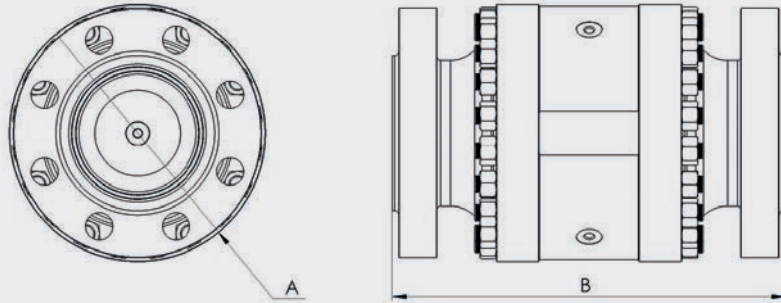
## PERFORMANCE & SIZING

ES Series	C <sub>v</sub>	K <sub>v</sub>
DN050 (2")	110	95
DN080 (3")	280	240
DN100 (4")	500	430
DN150 (6")	1125	975
DN200 (8")	2000	1725
DN250 (10")	3125	2700
DN300 (12")	4500	3900

Fully open, no cage trim. Control trims available on request.



Headquarters: Oxford, U.K  
U.S Office: Houston, Texas  
E: [info@oxford-flow.com](mailto:info@oxford-flow.com) W: [www.oxford-flow.com](http://www.oxford-flow.com)



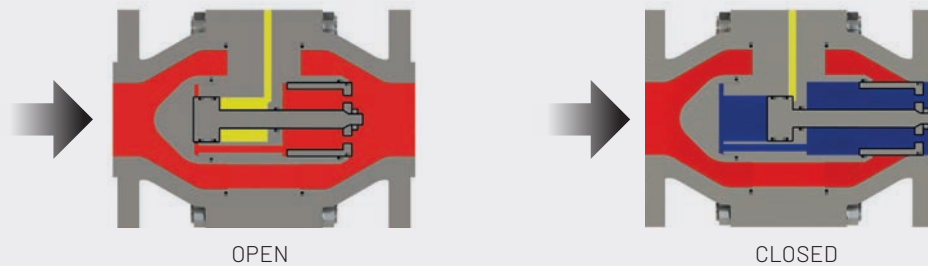
## KEY DIMENSIONS (MM/IN)

Nominal Diameter	Diameter $\varnothing$ (A)	Length (B)	Weight*
DN050 (2")	230mm / 9.06"	ASME B16.10 (Alternative lengths on request)	60kg / 132lb
DN080 (3")	260mm / 10.23"		85kg / 187lb
DN100 (4")	300mm / 11.81"		148kg / 326lb
DN150 (6")	400mm / 15.74"		275kg / 606lb
DN200 (8")	480mm / 18.90"		450kg / 992lb
DN250 (10")	560mm / 22.04"		760kg / 1675lb
DN300 (12")	630mm / 24.80"		1000kg / 2204lb

Larger sizes, custom lengths and different flange connections available on request.

\* ASME #900

## OPERATION



## CONSTRUCTION MATERIALS

Components	Materials
Body	Stainless steel 316
Closure Member	Stainless steel 316
Seat material	Energised PTFE, metal seated options also available
Trim and fittings	Stainless steel 316
Dynamic seals	Spring energised PTFE
Static seals	Elastomer
Casing seals	Spring energised PTFE + Graphite (firesafe) + Elastomer (weatherproof)

Alternative materials available on request.

DISCLAIMER. Details of products may vary. Oxford Flow does not guarantee or warrant the availability of the models described in this Product Bulletin or the accuracy or completeness of the details provided. The contents of this Product Bulletin shall not form the basis of any contract or representation. Please refer to the relevant Product Data Sheet for technical details of our products.