

# ES STEMLESS VALVE

## MODEL: ES

High performance, axial flow valve with no mechanical actuator  
For upstream, midstream and downstream oil & gas applications.



## PRODUCT OVERVIEW

The Oxford Flow ES Series actuated valve offers class leading performance and reliability for oil & gas processes. By eliminating the traditional mechanical actuator and drivetrain in favour of direct hydraulic actuation, the ES Series offers class leading performance and reliability.

The ES Stemless Valve was awarded Best Mechanical Engineering Achievement Award by the American Society of Mechanical Engineers (ASME) and has also been named in the Top 10 Global technologies in the ADNOC Decarbonization Technology Challenge for eliminating fugitive emissions.

This game changing technology from Oxford Flow's ES Series valve is for use in the most demanding isolation and control applications.

Designed in accordance with API 6D/ASME B16.34

Certifications.

- API 6FA Fire Safe
- Fugitive Emissions ISO 15848-1 Class AH C03
- Slurry Tested to API 6AV1

Manufactured and tested in compliance with international valve standards according to customer requirements, including but not limited to API, ANSI, ASME, BS, DIN, NORSOK, TR2000 and ISO.

## APPLICATIONS

**Use with confidence in Upstream and Midstream Oil & Gas infrastructures.**

In place of:

- Ball Valve
- Gate Valve
- Plug Valve
- Butterfly Valve
- Globe Valve
- Stem Actuated Axial Valve

## BENEFITS & FEATURES

- No mechanical actuator or drivetrain
- Reliable internal hydraulic actuation
- Isolation and control options available
- Dramatically reduced assembly size/weight
- No moving parts protruding valve housing
- Eliminates main source of fugitive emissions
- Debris tolerant
- Robust and reliable
- Non-intrusive position sensing
- Various fail-safe options available
- Back-up manual hydraulic overrides available

## Scope

- Temperature range -40°F to +284°F
- Sizes 2" and up
- Pressure Class ASME #300 - #1500\*
- Shut Off Class CLASS VI (Soft Seat)  
CLASS IV (Metal Seat)

\*Other pressure classes available on request.

## PERFORMANCE & SIZING

ES Series	C <sub>v</sub>	K <sub>v</sub>
2"	110	95
3"	280	240
4"	500	430
6"	1125	975
8"	2000	1725
10"	3125	2700
12"	4500	3900

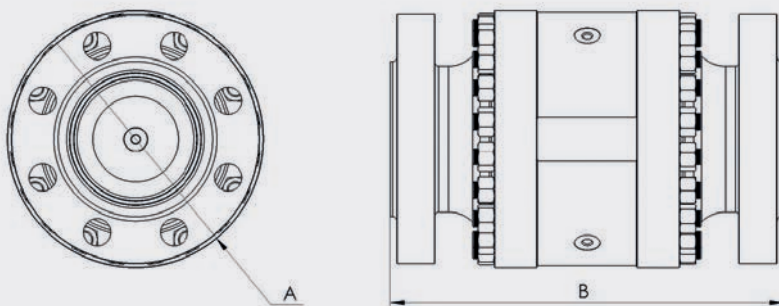
Fully open, no cage trim. Control trims available on request.



Headquarters: Oxford, UK

US Office: Houston, Texas

**E:** [info@oxford-flow.com](mailto:info@oxford-flow.com) **W:** [www.oxford-flow.com](http://www.oxford-flow.com)



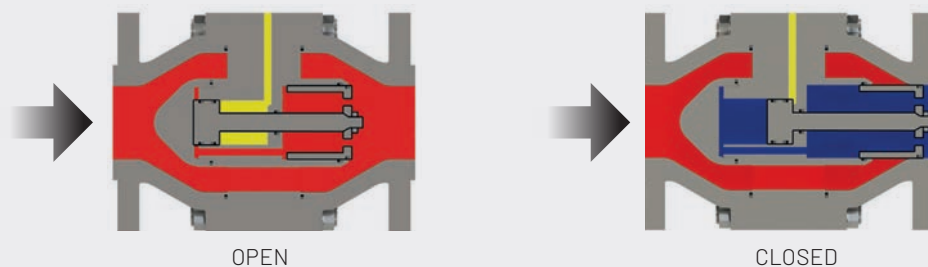
## KEY DIMENSIONS (IN)

Nominal Diameter	Diameter $\varnothing$ (A)	Length (B)	Weight*
2"	9.06"	ASME B16.10 (Alternative lengths on request)	132 lbs
3"	10.23"		187 lbs
4"	11.81"		326 lbs
6"	15.74"		606 lbs
8"	18.90"		992 lbs
10"	22.04"		1675 lbs
12"	24.80"		2204 lbs

Larger sizes, custom lengths and different flange connections available on request.

\* ASME #900

## OPERATION



## CONSTRUCTION MATERIALS

Components	Materials
Body	Stainless steel 316
Closure Member	Stainless steel 316
Seat material	Energised PTFE, metal seated options also available
Trim and fittings	Stainless steel 316
Dynamic seals	Spring energised PTFE
Static seals	Elastomer
Casing seals	Spring energised PTFE + Graphite (firesafe) + Elastomer (weatherproof)

Alternative materials available on request.

DISCLAIMER. Details of products may vary. Oxford Flow does not guarantee or warrant the availability of the models described in this Product Bulletin or the accuracy or completeness of the details provided. The contents of this Product Bulletin shall not form the basis of any contract or representation. Please refer to the relevant Product Data Sheet for technical details of our products.